



SINCE 1992

PASS BOX STATIC

Page 01 - PASS BOX - Types.

Page 02 to Page 04- SELECTION of PASS BOX.

Page 05 & Page 06 - PASS BOX IMAGES.

Page 07 & 08 - STATIC PASS BOX MILD STEEL STANDARD MODELS.

Page 09 & 10 - STATIC PASS BOX STAINLESS STEEL 202 GRADE STANDARD MODELS.

Page 11 & 12 - STATIC PASS BOX STAINLESS STEEL 304 GRADE STANDARD MODELS.

Page 13 & 14 - STATIC PASS BOX MS & SS 202 STANDARD MODELS.

Page 15 & 16 - STATIC PASS BOX MS & SS 304 STANDARD MODELS.

Page 17 - STATIC PASS BOX COMPONENTS.

Page 18 - PASS BOX IMAGES.

Page 19 & 20 - STATIC PASS BOX WEIGHT AND DOOR TYPES

SAM PRODUCTS (P) Ltd

Greater Noida 201 310, U.P., INDIA

9810065139

samproducts1992@gmail.com

samproducts25@gmail.com

www.samproducts.net

09AAKCS6327D1Z8

U51101UP2007PTC055433

PASS BOX - Types

PASS BOX, also known as TRANSFER HATCHES are normally used for Transfer of Material from One Sterilized Area to another or Transfer of Material from One Non Sterilized Area to Sterilized Area & visa versa. The Transfer thus can be between any two Levels of Cleanliness.

Transfer of Material from one Area to another using PASS BOX assists to avoid Air Flow from one area to another.

PASS BOX are broadly categorised as

01. STATIC PASS BOX (SPB).	Static Pass Box are Ideal for Locations wherein Air Flow is NOT required. This may be Two Areas of same Class Levels, thus for Non Sensitive or Fast Moving Products.
02. SEMI DYNAMIC PASS BOX (SDPB).	Semi Dynamic Pass Box due to its Flexibility, is used during construction of New Clean Room. SDPB is an application of 0.3 micron Filter & assists to achieve higher Class Level of Certification.
03. DYNAMIC PASS BOX (DPB)	Dynamic Pass Box are used for existing Clean Rooms of Different Class Levels or Pollution Levels.

PASS BOX may have similar features such as Mechanical or Electro Magnetic Door Interlocking, UV Lights, LED, Material of Construction of Cabinet, Floor Surface, etc. However some Differences may be as follows.

Sr No	STATIC PASS BOX	DYNAMIC PASS BOX
1	Static Pass Box are commonly used for Transfer of Material between Two Areas having same Clean Class Environments.	Dynamic Pass Box are preferred Transfer of Material for Two Non Clean Areas or Two Areas of Separate Class Levels.
2	Static Pass Box Doors may be simply Interlocked with LED to Indicate Door Open status.	Most of the Dynamic Pass Box have Both Interlocked Doors to avoid Exchange of Polluted Air during
3	Static Pass Box are designed for Air Lock to prevent ambient Air Entry.	Dynamic Pass Box are designed to have Suction Filter of 10 micron & Terminal Filter of 0.3 micron along
4	LED for Static Pass Box selected is 40W. LED glows only when the Door is Open.	LED for Dynamic Pass Box selected is 8W. LED glows only when the Door is Open.

SELECTION of PASS BOX

Sr No	Item	Description
1	Pass Box Size (Inside)	Size of Material to be passed through PASS BOX shall decide the Inner Size. Thus it is suggested Size of Pass Box at Inside should be atleast 150mm more on all sides than the Material Size.
2	Material of Construction (Cabinet)	Material of Construction used for Pass Box may be Mild Steel or Galvanised Sheet or Stainless Steel Grade (202 or 304 or 316). Material can also be mixed, such as Mild Steel or Galvanised Steel on Outside Skin & Stainless Steel on Inside Skin.
3	Types of Pass Box	Static Pass Box or Dynamic Pass Box is as per Class Level on either side of Pass Box.
		(a) Static Pass Box.
		(b) Semi Dynamic Pass Box.
		(c) Dynamic Pass Box.
4	Floor	Material weight or Volume shall decide the Type of Floor required.
5	Types of Floor	Floor to be provided can be
		(a) Customer Existing Floor.
		(b) Stainless Steel Floor - Plain Sheet.
		(c) Stainless Steel Floor suitable for Heavy Weights upto 300Kg.
		(d) MS Angle Grated Floor.
		(e) Water Tray Floor with Grating.
		(f) Manual Conveyor Type Floor.
		(g) Auto Conveyor Type Floor.
		(h) Manual SS Roller.
		(j) Auto SS Roller Floor.
		(k) Floor at Height.
		(l) Filters at Floor.
(m) Track for Wheel Movement.		
6	Available Space	Purchaser should check Space available for Pass Box placement.

SELECTION of PASS BOX (contd....)

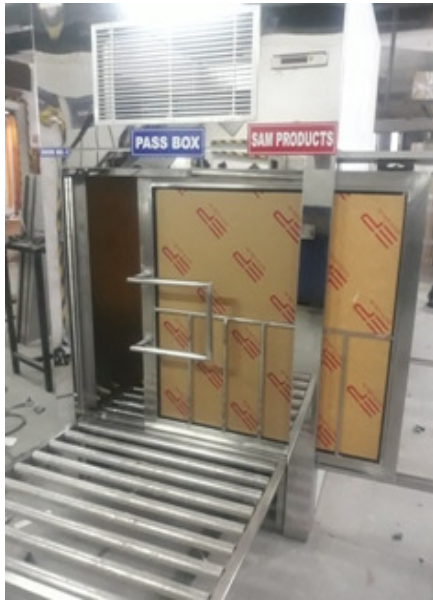
7	Door	Pass Box usually have Flushed Doors. Customer can select Type of Door.
8	Types of Door	Doors required may be
		(a) Single Leaf Hinged Door.
		(d) Double Leaf Hinged Door.
		(c) Single Leaf Manual Slide Door.
		(d) Double Leaf Manual Slide Door.
		(e) Single Leaf Auto Slide Door.
		(f) Double Leaf Auto Slide Door.
		(g) Auto Rolling Shutter.
		(h) Air Curtain (No Door).
		(i) PVC Strip Curtain (No Door).
9	MOC of Door	Door MOC may vary from End Use to End Use. Customer can select from following Options or provide other Options to incorporate.
		(a) Mild Steel Sheet Door (without View Glass).
		(b) Mild Steel Pipe Frame Door (with Top Half as View Glass).
		(c) Mild Steel Pipe Frame Door (all Glass).
		(d) Stainless Steel Sheet Door (without View Glass).
		(e) Stainless Steel Pipe Frame Door (with Top Half as View Glass).
		(f) Stainless Steel Pipe Frame Door (all Glass).
		(g) Rolling Door with Canvas/ Aluminium.
		(h) PVC Strip Curtains at Opening.
		(i) Air Curtain at Opening.
10	Input Power Supply	Input Power Supply may vary as per Size of Pass Box.
		(a) Single Phase, 220V, 50Hz.
		(b) Three Phase, 440V, 50Hz.
11	Air Leak Tight	Some Applications require Air Leak Tight Doors. Application Share by Customer during Design stage shall assist to Select suitable Product.
12	Maintenance	Easy Maintenance of Pass Box as and when required. Suggested Maintenance from Non Clean Area.

SELECTION of PASS BOX (contd...)

13	Door Interlocking	Door Interlocking at both sides ensures any one Door may be Open at any given time.
14	High Volume Transfer or Heavy Weight	Transfer of High Volume Item or Heavy Weight Item thru Pass Box may require Thick Sheets on the Wall. We at Sam Products select most suitable Material to ensure Long Life Performance.
15	UV Light	Germicidal and UV Light can be Installed in the Pass Box for Increased Protection. UV Light assists to destroy DNA Pathogens. Hour Meter along with UV Light is suggested.
16	Meter	Inclined Tube Manometer or Magnehelic Differential Pressure Gauge or may be used for Low Differential Pressures.
17	Door Accessories	Accessories include Door Handle/ Door Hinge/ Door Closer/ View Glass/ Door brush/ etc.
18	Internal Covings	Internal Covings may be PVC or SS.
19	Door Unlock	Options for Door Unlock Include
		(a) Door Handle.
		(b) Numeric Lock.
		(c) Biometric Authentication.
		(d) Motion Sensor.
		(e) Release Switch.
		(f) Beam Sensor.
20	Install Support	Installation Support may Include
		(a) Mild Steel (or Stainless Steel) Pipe Frame.
		(b) Three Sided Wall Structure.
		(c) Slide Channel for Slide Door.
		(d) Half Height Barrier at Exit Door.
		(e) Remote ON/ OFF.
		(f) Audio Video during Material Transfer.
		(g) Incoming Power Termination from Top.
		(h) Alarm/ Hooter/ Music during Door Open.
		(i) Light/ LED "ON" during Door Open.
(j) Gap Closing between Pass Box & Wall/ Ceiling/ Floor.		



PASS BOX IMAGES



PASS BOX IMAGES



PASS BOX STATIC

Material of Construction (Cabinet) - Mild Steel.

MODEL	SIZE (ID)			SIZE (OD)		
	W	D	H	W	D	H
SPS36	450	450	450	550	520	600
SPS37	600	600	600	700	670	750
SPS38	600	600	900	800	670	1050
SPS39	600	600	1200	800	670	1350
SPS40	600	600	1800	900	670	1950
SPS41	600	900	600	800	970	750
SPS42	600	900	900	800	970	1050
SPS43	600	900	1200	800	970	1350
SPS44	600	900	1800	900	970	1950
SPS45	600	1200	600	800	1270	750
SPS46	600	1200	900	800	1270	1050
SPS47	600	1200	1200	800	1270	1350
SPS48	600	1200	1800	900	1270	1950
SPS49	600	1800	600	800	1870	750
SPS50	600	1800	900	800	1870	1050
SPS51	600	1800	1200	800	1870	1350
SPS52	900	1800	1800	900	1870	1950
SPS53	900	600	600	1100	670	750
SPS54	900	600	900	1100	670	1050
SPS55	900	600	1200	1100	670	1350
SPS56	900	600	1800	1200	670	1950
SPS57	900	900	600	1100	970	750
SPS58	900	900	900	1100	1030	1050
SPS59	900	900	1200	1100	1030	1350
SPS60	900	900	1800	1200	1030	1950
SPS61	900	1200	600	1100	1030	750
SPS62	900	1200	900	1100	1270	1050
SPS63	900	1200	1200	1100	1270	1350
SPS64	900	1200	1800	1200	1270	1950
SPS65	900	1800	600	1100	1930	750

	W	D	H	W	D	H
SPS66	900	1800	900	1100	1930	1050
SPS67	900	1800	1200	1100	1930	1350
SPS68	900	1800	1800	1200	1930	1950
SPS69	1200	600	600	1400	730	750
SPS70	1200	600	900	1400	730	1050
SPS71	1200	600	1200	1400	730	1350
SPS72	1200	600	1800	1500	670	1950
SPS73	1200	900	600	1400	1030	750
SPS74	1200	900	900	1400	1030	1050
SPS75	1200	900	1800	1500	1030	1950
SPS76	1200	1200	600	1400	1270	750
SPS77	1200	1200	900	1400	1270	1050
SPS78	1200	1200	1200	1500	1270	1350
SPS79	1200	1200	1800	1500	1270	1950
SPS80	1200	1500	600	1400	1570	750
SPS81	1200	1500	900	1400	1570	1050
SPS82	1200	1500	1200	1500	1570	1350
SPS83	1200	1500	1800	1500	1570	1950
SPS84	1800	600	600	2100	730	750
SPS85	1800	600	900	2100	730	1050
SPS86	1800	600	1200	2100	730	1350
SPS87	1800	600	1800	2100	730	1950
SPS88	1800	900	600	2100	1030	750
SPS89	1800	900	900	2100	1030	1050
SPS90	1800	900	1200	2100	1030	1350
SPS91	1800	900	1800	2100	970	1950
SPS92	1800	1200	600	2100	1270	750
SPS93	1800	1200	900	2100	1270	1050
SPS94	1800	1200	1200	2100	1270	1350
SPS95	1800	1200	1800	2100	1270	1950
SPS96	1800	1800	600	2100	1870	750
SPS97	1800	1800	900	2100	1870	1050
SPS98	1800	1800	1200	2100	1870	1350
SPS99	1800	1800	1800	2100	1870	1950

PASS BOX STATIC

Material of Construction (Cabinet) - Stainless Steel 202 Grade.

MODEL	SIZE (ID)			SIZE (OD)		
	W	D	H	W	D	H
SPS36S	450	450	450	550	520	600
SPS37S	600	600	600	700	670	750
SPS38S	600	600	900	800	670	1050
SPS39S	600	600	1200	800	670	1350
SPS40S	600	600	1800	900	670	1950
SPS41S	600	900	600	800	970	750
SPS42S	600	900	900	800	970	1050
SPS43S	600	900	1200	800	970	1350
SPS44S	600	900	1800	900	970	1950
SPS45S	600	1200	600	800	1270	750
SPS46S	600	1200	900	800	1270	1050
SPS47S	600	1200	1200	800	1270	1350
SPS48S	600	1200	1800	900	1270	1950
SPS49S	600	1800	600	800	1870	750
SPS50S	600	1800	900	800	1870	1050
SPS51S	600	1800	1200	800	1870	1350
SPS52S	900	1800	1800	900	1870	1950
SPS53S	900	600	600	1100	670	750
SPS54S	900	600	900	1100	670	1050
SPS55S	900	600	1200	1100	670	1350
SPS56S	900	600	1800	1200	670	1950
SPS57S	900	900	600	1100	970	750
SPS58S	900	900	900	1100	1030	1050
SPS59S	900	900	1200	1100	1030	1350
SPS60S	900	900	1800	1200	1030	1950
SPS61S	900	1200	600	1100	1030	750
SPS62S	900	1200	900	1100	1270	1050
SPS63S	900	1200	1200	1100	1270	1350
SPS64S	900	1200	1800	1200	1270	1950
SPS65S	900	1800	600	1100	1930	750
SPS66S	900	1800	900	1100	1930	1050

	W	D	H	W	D	H
SPS67S	900	1800	1200	1100	1930	1350
SPS68S	900	1800	1800	1200	1930	1950
SPS69S	1200	600	600	1400	730	750
SPS70S	1200	600	900	1400	730	1050
SPS71S	1200	600	1200	1400	730	1350
SPS72S	1200	600	1800	1500	670	1950
SPS73S	1200	900	600	1400	1030	750
SPS74S	1200	900	900	1400	1030	1050
SPS75S	1200	900	1800	1500	1030	1950
SPS76S	1200	1200	600	1400	1270	750
SPS77S	1200	1200	900	1400	1270	1050
SPS78S	1200	1200	1200	1500	1270	1350
SPS79S	1200	1200	1800	1500	1270	1950
SPS80S	1200	1500	600	1400	1570	750
SPS81S	1200	1500	900	1400	1570	1050
SPS82S	1200	1500	1200	1500	1570	1350
SPS83S	1200	1500	1800	1500	1570	1950
SPS84S	1800	600	600	2100	730	750
SPS85S	1800	600	900	2100	730	1050
SPS86S	1800	600	1200	2100	730	1350
SPS87S	1800	600	1800	2100	730	1950
SPS88S	1800	900	600	2100	1030	750
SPS89S	1800	900	900	2100	1030	1050
SPS90S	1800	900	1200	2100	1030	1350
SPS91S	1800	900	1800	2100	970	1950
SPS92S	1800	1200	600	2100	1270	750
SPS93S	1800	1200	900	2100	1270	1050
SPS94S	1800	1200	1200	2100	1270	1350
SPS95S	1800	1200	1800	2100	1270	1950
SPS96S	1800	1800	600	2100	1870	750
SPS97S	1800	1800	900	2100	1870	1050
SPS98S	1800	1800	1200	2100	1870	1350
SPS99S	1800	1800	1800	2100	1870	1950

PASS BOX STATIC

Material of Construction (Cabinet) - Stainless Steel 304 Grade.

MODEL	SIZE (ID)			SIZE (OD)		
	W	D	H	W	D	H
SPS36S3	450	450	450	550	520	600
SPS37S3	600	600	600	700	670	750
SPS38S3	600	600	900	800	670	1050
SPS39S3	600	600	1200	800	670	1350
SPS40S3	600	600	1800	900	670	1950
SPS41S3	600	900	600	800	970	750
SPS42S3	600	900	900	800	970	1050
SPS43S3	600	900	1200	800	970	1350
SPS44S3	600	900	1800	900	970	1950
SPS45S3	600	1200	600	800	1270	750
SPS46S3	600	1200	900	800	1270	1050
SPS47S3	600	1200	1200	800	1270	1350
SPS48S3	600	1200	1800	900	1270	1950
SPS49S3	600	1800	600	800	1870	750
SPS50S3	600	1800	900	800	1870	1050
SPS51S3	600	1800	1200	800	1870	1350
SPS52S3	900	1800	1800	900	1870	1950
SPS53S3	900	600	600	1100	670	750
SPS54S3	900	600	900	1100	670	1050
SPS55S3	900	600	1200	1100	670	1350
SPS56S3	900	600	1800	1200	670	1950
SPS57S3	900	900	600	1100	970	750
SPS58S3	900	900	900	1100	1030	1050
SPS59S3	900	900	1200	1100	1030	1350
SPS60S3	900	900	1800	1200	1030	1950
SPS61S3	900	1200	600	1100	1030	750
SPS62S3	900	1200	900	1100	1270	1050
SPS63S3	900	1200	1200	1100	1270	1350
SPS64S3	900	1200	1800	1200	1270	1950
SPS65S3	900	1800	600	1100	1930	750
SPS66S3	900	1800	900	1100	1930	1050

	W	D	H	W	D	H
SPS67S3	900	1800	1200	1100	1930	1350
SPS68S3	900	1800	1800	1200	1930	1950
SPS69S3	1200	600	600	1400	730	750
SPS70S3	1200	600	900	1400	730	1050
SPS71S3	1200	600	1200	1400	730	1350
SPS72S3	1200	600	1800	1500	670	1950
SPS73S3	1200	900	600	1400	1030	750
SPS74S3	1200	900	900	1400	1030	1050
SPS75S3	1200	900	1800	1500	1030	1950
SPS76S3	1200	1200	600	1400	1270	750
SPS77S3	1200	1200	900	1400	1270	1050
SPS78S3	1200	1200	1200	1500	1270	1350
SPS79S3	1200	1200	1800	1500	1270	1950
SPS80S3	1200	1500	600	1400	1570	750
SPS81S3	1200	1500	900	1400	1570	1050
SPS82S3	1200	1500	1200	1500	1570	1350
SPS83S3	1200	1500	1800	1500	1570	1950
SPS84S3	1800	600	600	2100	730	750
SPS85S3	1800	600	900	2100	730	1050
SPS86S3	1800	600	1200	2100	730	1350
SPS87S3	1800	600	1800	2100	730	1950
SPS88S3	1800	900	600	2100	1030	750
SPS89S3	1800	900	900	2100	1030	1050
SPS90S3	1800	900	1200	2100	1030	1350
SPS91S3	1800	900	1800	2100	970	1950
SPS92S3	1800	1200	600	2100	1270	750
SPS93S3	1800	1200	900	2100	1270	1050
SPS94S3	1800	1200	1200	2100	1270	1350
SPS95S3	1800	1200	1800	2100	1270	1950
SPS96S3	1800	1800	600	2100	1870	750
SPS97S3	1800	1800	900	2100	1870	1050
SPS98S3	1800	1800	1200	2100	1870	1350
SPS99S3	1800	1800	1800	2100	1870	1950

PASS BOX STATIC

Material of Construction (Cabinet) - Mild Steel (Outside Skin) & Stainless Steel 202 Grade (Inside Skin).

MODEL	SIZE (ID)			SIZE (OD)		
	W	D	H	W	D	H
SPS36SM	450	450	450	550	520	600
SPS37SM	600	600	600	700	670	750
SPS38SM	600	600	900	800	670	1050
SPS39SM	600	600	1200	800	670	1350
SPS40SM	600	600	1800	900	670	1950
SPS41SM	600	900	600	800	970	750
SPS42SM	600	900	900	800	970	1050
SPS43SM	600	900	1200	800	970	1350
SPS44SM	600	900	1800	900	970	1950
SPS45SM	600	1200	600	800	1270	750
SPS46SM	600	1200	900	800	1270	1050
SPS47SM	600	1200	1200	800	1270	1350
SPS48SM	600	1200	1800	900	1270	1950
SPS49SM	600	1800	600	800	1870	750
SPS50SM	600	1800	900	800	1870	1050
SPS51SM	600	1800	1200	800	1870	1350
SPS52SM	900	1800	1800	900	1870	1950
SPS53SM	900	600	600	1100	670	750
SPS54SM	900	600	900	1100	670	1050
SPS55SM	900	600	1200	1100	670	1350
SPS56SM	900	600	1800	1200	670	1950
SPS57SM	900	900	600	1100	970	750
SPS58SM	900	900	900	1100	1030	1050
SPS59SM	900	900	1200	1100	1030	1350
SPS60SM	900	900	1800	1200	1030	1950
SPS61SM	900	1200	600	1100	1030	750
SPS62SM	900	1200	900	1100	1270	1050
SPS63SM	900	1200	1200	1100	1270	1350
SPS64SM	900	1800	1800	1200	1270	1950
SPS65SM	900	1800	600	1100	1930	750
SPS66SM	900	1800	900	1100	1930	1050

	W	D	H	W	D	H
SPS67SM	900	1800	1200	1100	1930	1350
SPS68SM	900	1800	1800	1200	1930	1950
SPS69SM	1200	600	600	1400	730	750
SPS70SM	1200	600	900	1400	730	1050
SPS71SM	1200	600	1200	1400	730	1350
SPS72SM	1200	600	1800	1500	670	1950
SPS73SM	1200	900	600	1400	1030	750
SPS74SM	1200	900	900	1400	1030	1050
SPS75SM	1200	900	1800	1500	1030	1950
SPS76SM	1200	1200	600	1400	1270	750
SPS77SM	1200	1200	900	1400	1270	1050
SPS78SM	1200	1200	1200	1500	1270	1350
SPS79SM	1200	1200	1800	1500	1270	1950
SPS80SM	1200	1500	600	1400	1570	750
SPS81SM	1200	1500	900	1400	1570	1050
SPS82SM	1200	1500	1200	1500	1570	1350
SPS83SM	1200	1500	1800	1500	1570	1950
SPS84SM	1800	600	600	2100	730	750
SPS85SM	1800	600	900	2100	730	1050
SPS86SM	1800	600	1200	2100	730	1350
SPS87SM	1800	600	1800	2100	730	1950
SPS88SM	1800	900	600	2100	1030	750
SPS89SM	1800	900	900	2100	1030	1050
SPS90SM	1800	900	1200	2100	1030	1350
SPS91SM	1800	900	1800	2100	970	1950
SPS92SM	1800	1200	600	2100	1270	750
SPS93SM	1800	1200	900	2100	1270	1050
SPS94SM	1800	1200	1200	2100	1270	1350
SPS95SM	1800	1200	1800	2100	1270	1950
SPS96SM	1800	1800	600	2100	1870	750
SPS97SM	1800	1800	900	2100	1870	1050
SPS98SM	1800	1800	1200	2100	1870	1350
SPS99SM	1800	1800	1800	2100	1870	1950

PASS BOX STATIC

Material of Construction (Cabinet) - Mild Steel (Outside Skin) & Stainless Steel 304 Grade (Inside Skin).

MODEL	SIZE (ID)			SIZE (OD)		
	W	D	H	W	D	H
SPS36S3M	450	450	450	550	520	600
SPS37S3M	600	600	600	700	670	750
SPS38S3M	600	600	900	800	670	1050
SPS39S3M	600	600	1200	800	670	1350
SPS40S3M	600	600	1800	900	670	1950
SPS41S3M	600	900	600	800	970	750
SPS42S3M	600	900	900	800	970	1050
SPS43S3M	600	900	1200	800	970	1350
SPS44S3M	600	900	1800	900	970	1950
SPS45S3M	600	1200	600	800	1270	750
SPS46S3M	600	1200	900	800	1270	1050
SPS47S3M	600	1200	1200	800	1270	1350
SPS48S3M	600	1200	1800	900	1270	1950
SPS49S3M	600	1800	600	800	1870	750
SPS50S3M	600	1800	900	800	1870	1050
SPS51S3M	600	1800	1200	800	1870	1350
SPS52S3M	900	1800	1800	900	1870	1950
SPS53S3M	900	600	600	1100	670	750
SPS54S3M	900	600	900	1100	670	1050
SPS55S3M	900	600	1200	1100	670	1350
SPS56S3M	900	600	1800	1200	670	1950
SPS57S3M	900	900	600	1100	970	750
SPS58S3M	900	900	900	1100	1030	1050
SPS59S3M	900	900	1200	1100	1030	1350
SPS60S3M	900	900	1800	1200	1030	1950
SPS61S3M	900	1200	600	1100	1030	750
SPS62S3M	900	1200	900	1100	1270	1050
SPS63S3M	900	1200	1200	1100	1270	1350
SPS64S3M	900	1800	1800	1200	1270	1950
SPS65S3M	900	1800	600	1100	1930	750
SPS66S3M	900	1800	900	1100	1930	1050

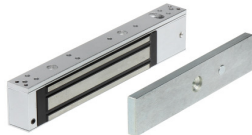
	W	D	H	W	D	H
SPS67S3M	900	1800	1200	1100	1930	1350
SPS68S3M	900	1800	1800	1200	1930	1950
SPS69S3M	1200	600	600	1400	730	750
SPS70S3M	1200	600	900	1400	730	1050
SPS71S3M	1200	600	1200	1400	730	1350
SPS72S3M	1200	600	1800	1500	670	1950
SPS73S3M	1200	900	600	1400	1030	750
SPS74S3M	1200	900	900	1400	1030	1050
SPS75S3M	1200	900	1800	1500	1030	1950
SPS76S3M	1200	1200	600	1400	1270	750
SPS77S3M	1200	1200	900	1400	1270	1050
SPS78S3M	1200	1200	1200	1500	1270	1350
SPS79S3M	1200	1200	1800	1500	1270	1950
SPS80S3M	1200	1500	600	1400	1570	750
SPS81S3M	1200	1500	900	1400	1570	1050
SPS82S3M	1200	1500	1200	1500	1570	1350
SPS83S3M	1200	1500	1800	1500	1570	1950
SPS84S3M	1800	600	600	2100	730	750
SPS85S3M	1800	600	900	2100	730	1050
SPS86S3M	1800	600	1200	2100	730	1350
SPS87S3M	1800	600	1800	2100	730	1950
SPS88S3M	1800	900	600	2100	1030	750
SPS89S3M	1800	900	900	2100	1030	1050
SPS90S3M	1800	900	1200	2100	1030	1350
SPS91S3M	1800	900	1800	2100	970	1950
SPS92S3M	1800	1200	600	2100	1270	750
SPS93S3M	1800	1200	900	2100	1270	1050
SPS94S3M	1800	1200	1200	2100	1270	1350
SPS95S3M	1800	1200	1800	2100	1270	1950
SPS96S3M	1800	1800	600	2100	1870	750
SPS97S3M	1800	1800	900	2100	1870	1050
SPS98S3M	1800	1800	1200	2100	1870	1350
SPS99S3M	1800	1800	1800	2100	1870	1950

PASS BOX COMPONENTS

STANDARD COMPONENTS - PASS BOX - DYNAMIC



1. Release Switch.
2. Emergency Release Switch.
3. UV Light.
4. Hour Meter.
5. Display Panel.
6. Fluorescent LED Fixtures.
7. Strong Hinged/ Sliding Doors with View Glass.
8. Micro Processor Panel.
9. Access Panel for Easy Maintenance.
10. Electric Interlocking for Doors.



OPTIONAL COMPONENTS - PASS BOX

1. Epoxy Painted Cold Rolled Steel and Stainless Steel.
2. Safety Plate Glass Doors.
3. Maghnelic Gauge HEPA Filters.
4. Standby Air Flow.
5. Ceiling Mounted HEPA filter for constant Laminar Flow.
6. Raised Floor Grated Return.
7. Toughened Glass.
8. Flame Proof Construction/ Motor.
9. CCTV Provision.
10. Air Curtain/ PVC Strip Curtain at Entrance.



In line with our policy of Continual Product Improvement, we at SAM PRODUCTS Pvt Ltd reserve the right to incorporate and use equipment and material to conform to the latest Design of our Products while maintaining the specifications of the Equipment.

Material Supply shall be as per our Quote. Please add Items as may be required at your end before raising your PO.

Dimensions are for Information Only. For exact Dimension, please write to us at samproducts1992@gmail.com.

PASS BOX IMAGES



PASS BOX WEIGHT & DOOR TYPES

Material of Construction (Cabinet) - Mild Steel.

MODEL	Weight (Kg)	Type of Door
SPS36	90	SD
SPS37	90	SD
SPS38	120	SD
SPS39	180	SD
SPS40	120	SD
SPS41	130	SD
SPS42	150	SD
SPS43	190	SD
SPS44	120	SD
SPS45	150	SD
SPS46	150	SD
SPS47	190	SD
SPS48	150	SD
SPS49	150	SD
SPS50	170	SD
SPS51	360	SD
SPS52	150	SD
SPS53	150	SD
SPS54	150	SD
SPS55	250	SD
SPS56	150	SD
SPS57	150	SD
SPS58	160	SD
SPS59	240	SD
SPS60	160	SD
SPS61	180	SD
SPS62	180	SD
SPS63	250	SD
SPS64	280	SD
SPS65	300	SD
SPS66	300	SD

SD = Single Leaf Hinged Door

MD = Manual Slide Single Leaf Door

HSD = High Speed Door

PASS BOX WEIGHT & DOOR TYPES

Material of Construction (Cabinet) - Mild Steel.

MODEL	Weight (Kg)	Type of Door
SPS67	350	SD
SPS68	180	MD
SPS69	190	MD
SPS70	190	MD
SPS71	240	MD
SPS72	180	MD
SPS73	190	MD
SPS74	190	MD
SPS75	240	MD
SPS76	210	MD
SPS77	230	MD
SPS78	240	MD
SPS79	270	MD
SPS80	220	MD
SPS81	240	MD
SPS82	240	MD
SPS83	350	MD
SPS84	210	MD
SPS85	240	MD
SPS86	240	MD
SPS87	310	HSD
SPS88	210	MD
SPS89	210	MD
SPS90	220	MD
SPS91	380	HSD
SPS92	250	MD
SPS93	270	MD
SPS94	290	MD
SPS95	380	HSD
SPS96	320	MD
SPS97	340	MD
SPS98	360	MD
SPS99	390	HSD

SD = Single Leaf Hinged Door
 MD = Manual Slide Single Leaf Door
 HSD = High Speed Door

Last Updated on 19.11.2021